



## Coppertite Retrofit Drain Installation Instructions

**For Use With:** All types of roofing materials

**Job Preparation:** Remove existing Strainer and Clamping Ring. Remove any other existing drain components as required to enable our Coppertite Drain flange to lie flush on roof membrane. Remove any debris in the existing drain pipe that interferes with proper installation.

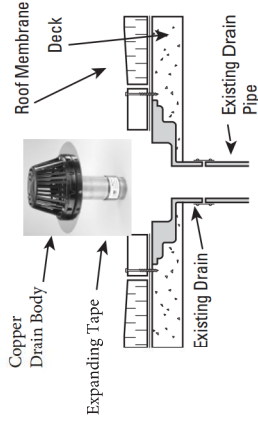


For technical questions please call  
Marathon @ 800-828-8424



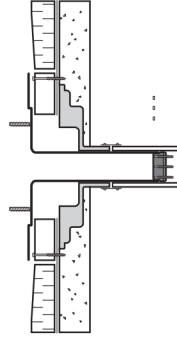
3310 N Benzing Road Orchard Park, NY 14127  
Ph: 800-828-8424  
[www.marathondrains.com](http://www.marathondrains.com)

#1



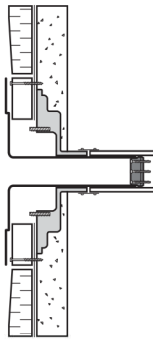
Inspect the existing drain pipe to make sure there are no elbows that prevent the drain stem from being fully inserted into the pipe. **If an elbow is present, follow directions on back page to shorten our Drain length. BEFORE WRAP IS REMOVED** - Insert Drain into existing drain pipe until flange is flush on roof membrane.

#2



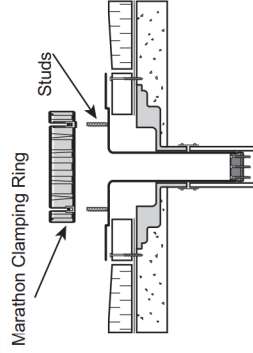
After confirming correct fit remove wrap and install drain into drain pipe. Expanding tape will gradually expand to fill void. Tape expands more slowly in cold temperatures and heat can be applied inside of the outlet to expand more rapidly if needed. **DO NOT OVERHEAT FLANGE/OUTLET AREA OR STUDS AS HEAT COULD LOOSEN THESE WELDED AREAS.** Should the tape expand too much before before installing the drain, simply recompress the tape by hand and then insert the drain.

#3



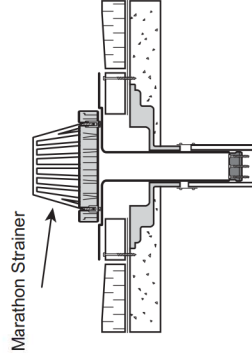
Secure the drain flange to the roof deck using a minimum of three fasteners that are evenly spaced around the flange. The flashing membrane must cover and extend past the fastener head. Flashing membrane must be installed per manufacturer's specifications.

#4



Place Marathon's Clamping Ring over metal studs and install supplied stainless steel nuts and washers. Tighten clamping ring against membrane flashing until secure. Do not over tighten as the possibility of the ring or studs could be damaged.

#5



Install Marathon's Strainer by aligning screw holes with the holes in the clamping ring. Secure with screws provided.

# Coppertite Retrofit Drain Installation Instructions

## HOW TO SHORTEN OUR COPPERTITE RETROFIT DRAIN

You may need to shorten our Coppertite outlet length if the existing vertical distance is too shallow to accommodate our standard 9" long outlet.



For technical questions please call

Marathon @ 800-828-8424



3310 N Benzing Road Orchard Park, NY 14127

Ph: 800-828-8424

[www.marathondrains.com](http://www.marathondrains.com)

**MEETS ANSI/SPRI RD-1 STANDARD**

**#1**

Make sure there is at least 4-inches of distance in the existing pipe to accommodate our Copper Drain. Cut drain stem to desired length. **Note:** Leave at least 2.5-inches of the drain stem to accommodate the expanding tape seal. See below.

**#2**

**NOTE: EXISTING TAPE ON DRAIN CANNOT BE RE-USED IF CUT OFF.** Marathon can supply an additional piece of expanding tape if needed. Also when ordering a drain the tape can be requested not to be installed on the drain if the drain needs to be shorten. Tape can be installed on jobsite if needed. Once the drain and seal have been assembled, insert it into the existing water leader and complete the assembly following 2 - 5 installation on front page (see reverse).



Maximum length  
2" (50mm)



Minimum drain outlet  
length 2.5" (63.5 mm)

The minimum length of our Coppertite Retrofit Drain stem